

# Installation Instruction Supplement -

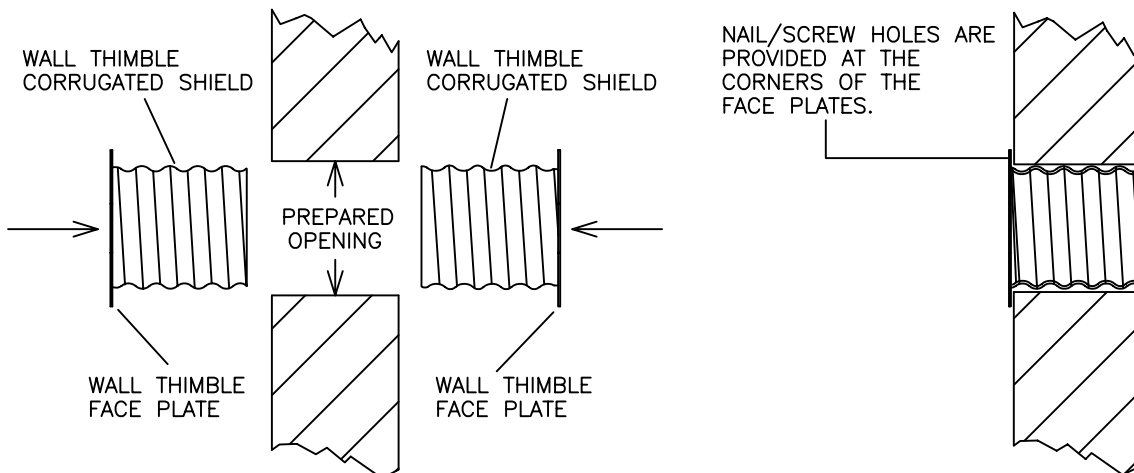
MODEL VP ALTERNATE WALL THIMBLE – PART# VP-WT, WTT

General: Refer to the main Model VP Installation Instructions for more detail. This instruction supplement covers the installation of an alternate wall thimble now offered for Model VP but not currently included in the main instructions. The standard Wall Thimble will accommodate wall thickness' of 4" to 7" while the "Thick Wall" Thimble will accommodate thickness' of 6-1/2" to 11-1/2". Install Wall Thimble as shown below.

Prepared opening dimensions are as follows:

Dia.	Square Opening Dims.	Round Opening Dims.
3"	6-1/4" x 6-1/4"	6-1/4" Dia.
4"	8-3/4" x 8-3/4"	8-3/4" Dia.

NOTE: THIMBLE IS SHIPPED IN THE FULLY ENGAGED POSITION. PRIOR TO INSTALLATION, YOU MUST DISENGAGE THIMBLE HALVES BY ROTATING FACE PLATES IN A COUNTER CLOCKWISE (CCW) DIRECTION (UNSCREW THE CORRUGATED SHIELDS).



AFTER FRAMING THE PROPER SIZED OPENING, INSERT THE TWO HALVES OF THE THIMBLE FROM OPPOSITE SIDES OF THE WALL AND ENGAGE BY ROTATING THE FACE PLATES IN A CLOCKWISE DIRECTION (SCREW TOGETHER THE CORRUGATED SHIELDS) UNTIL A SNUG FIT IS ACHIEVED. IF A TEE SECTION WITH SUPPORT BRACKETS IS TO BE INSTALLED ON ONE SIDE OF THE WALL PENETRATION, IT IS RECOMMENDED TO FRAME THE OPENING.

## ⚠ WARNING

Failure to follow the installation instructions could cause FIRE, CARBON MONOXIDE POISONING, OR DEATH. If you are unsure of installation requirements, call the Phone Number listed on the instructions or sizing handbook.