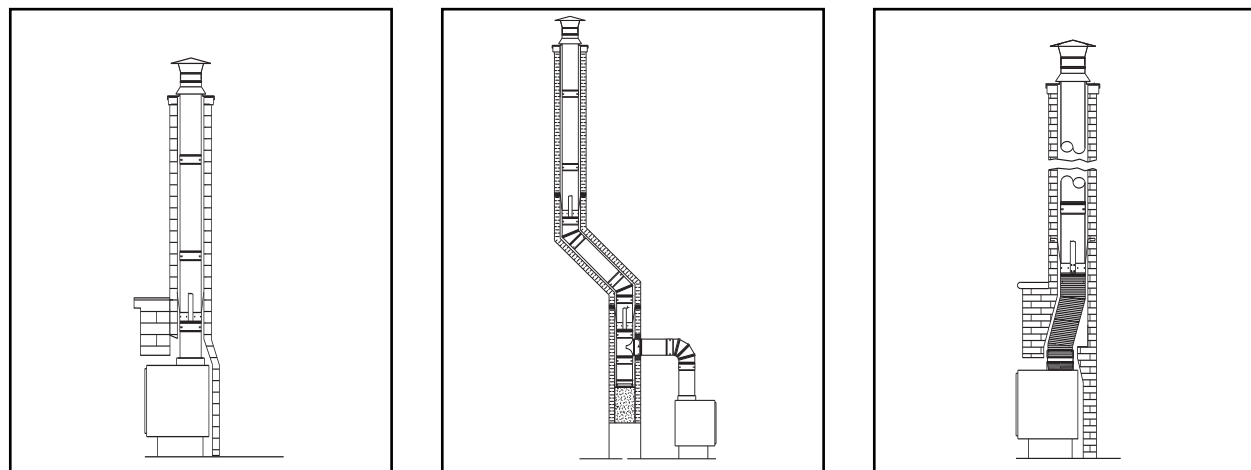


Guaranteed to perform.

In the last 20 years, thousands of Saf-T Liner systems have been installed. Each system is built to last. We offer a lifetime guarantee because we manufacture products that are simple to install and perform reliably year after year. You can count on it.



Saf-T Liner®

Chimney Liner System



- Easy to install
- Continuous-seam welding
- Smooth inside with obstruction-free joints
- Manufactured in a wide range of sizes
- 304L or 316L stainless steel



Technical Specifications:

- Single-wall.
- 4" – 8" diameters.
- Stainless steel 304 or 316
- Continuous-seam welded
- Tapered male and female ends.

Uses:

- Fireplaces, inserts or appliances burning wood, or fossil fuels, including coal and oil.

Fuels:

- Wood (304 stainless option)
- Fossil Fuels, including coal and oil (316 stainless option)

Temperature:

Up to 2100°F.

UL/cUL:

Tested & Listed to UL 1777 (Saf-T Liner installed with Saf-T Wrap).

Call us at 1-800-772-0739 or for more technical information visit us at www.heatfab.com



US Office
1301 W. President George Bush Hwy,
Suite 330
Richardson, Texas 75080-1139
(800) 992-8368 (VENT)
Toll Free Fax: (877) 393-4145
www.selkirkusa.com

Canada Office
375 Green Road
Stoney Creek, Ontario
Canada L8E 4A5
(888) 735-5475 (SELKIRK)
Fax: (866) 835-9624
www.selkirkcanada.com

Heatfab Office
130 Industrial Blvd.
Turners Falls, MA 01376
800-772-0739
Fax: 413-863-2803
sales@heatfab.com
www.heatfab.com

The edge in liner systems.



A system that works together saves time.

The Saf-T Liner® system is designed to be so easy to install, one professional on the job can do it alone – and have time to do another installation the same day. Saf-T Liner and Saf-T Wrap® are designed to make installation as trouble-free as possible.

Continuous-seam welding assures performance

Saf-T Liner is continuous-seam welded, using the most advanced laser- and resistance-welding technology in the world. Our welding expertise gives you the confidence that the system will perform in the most challenging conditions.

Smooth walls for safety

Saf-T Liner is smooth inside with obstruction-free joints, designed to minimize creosote accumulation. Porous cast or corrugated metal liners can't come close. And smooth walls make Saf-T Liner the easiest to clean.

Quality fittings

Saf-T Liner is manufactured in a wide range of sizes to fit just about any application, in 304L stainless steel for wood (biomass) fuel or 316L for fossil fuels, including coal and oil. Elbows, tees, terminations, accessories and adapters are all fabricated from the same quality materials, using the same advanced manufacturing techniques.



Saf-T Wrap®

Saf-T Wrap is a high-quality insulation system engineered to prevent corrosive condensation, improve appliance performance and enhance chimney safety.

Minimize creosote

Modern heating appliances operate with much lower stack temperatures than ever before. Saf-T Wrap's ceramic-fiber insulation and reflective aluminum jacket keep the flue warm to improve draft and minimize creosote buildup. Homeowners appreciate appliances that work more efficiently as well as cleaner flues.

Maximize fire protection

Occasionally, appliances do produce excess creosote and soot. If these materials ignite, a flue fire can occur. Installed in masonry chimneys, Saf-T Liners insulated with Saf-T Wrap have been field-proven to protect buildings during these violent fires.

Fast installation, immediate performance

In easy-to-handle lengths to fit all sizes of Saf-T Liner, Saf-T Wrap is designed with a snap-lock closure to speed installation. And unlike other liner systems, which require "curing" or a "break in period" of up to a week, Saf-T Liner systems insulated with Saf-T Wrap may be used right away.

UL listed for safety

Saf-T Wrap installed with Saf-T Liner or Saf-T Vent meets the rigors of UL 1777, including a 2100° F flue-fire simulation. Use high-quality parts from Heatfab and deliver extra peace of mind to your customers.



The best you can install

A SYSTEM SIZED FOR ANY JOB

Saf-T Liner® system supports a full range of sizes in tee covers, rain caps, top clamps, top plates, storm collars, cover plates, slip connectors and insulating wraps.

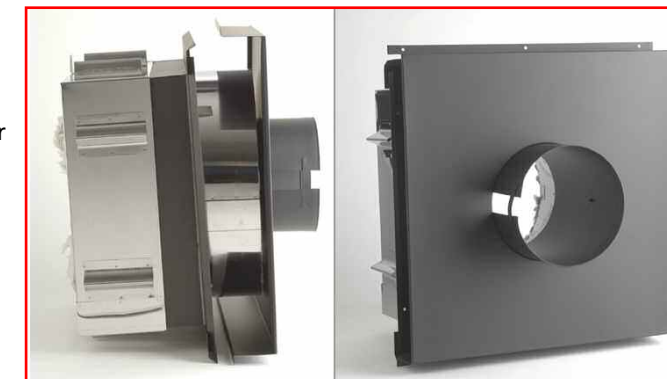
Lengths	12"	18"	24"	36"	48"
-Diameters	4"	5"	6"	7"	8"
Telescoping Sections	Lengths adjust from 50" – 70"				
-Diameters	5"	6"	7"	8"	
Elbows	15°	30°	45°	90°	
-Diameters	5"	6"	7"	8"	
Tees	4"	5"	6"	7"	8" Diameters

The right choice for every application.

Custom sizes are also available from 9 to 32 inches in diameter for large fireplaces or commercial applications.

Saf-T Thimble®

Saf-T Thimble is Heatfab's UL-listed through-the-wall assembly. It provides protection from the heat when the connector must pass through a combustible wall between the appliance and the chimney. Designed for use in modern building of conventional construction with walls between 5 and 10 inches in thickness, easy-to-install Saf-T Thimble shields any construction material from heat. Adaptable to new or existing masonry chimneys, the two-part Saf-T Thimble features an insulated stainless steel wall enclosure and an interior heavy-gauge convection heat shield.



Venting Top Kit

The Saf-T Liner Venting Top Kit is the right choice to finish relining chimneys built before the enforcement of modern building codes. When installed with a Saf-T Liner system and Saf-T Wrap, the venting Top Kit allows the system to meet the requirements of UL 1777 without building reconstruction.

The Venting Top Kit includes a ventilated storm collar, spacers and support hardware fabricated from 304L stainless steel. Appropriate for use with stoves, inserts or fireplaces, it can be installed in standard chimneys or fireplace chimneys.