



# Large Diameter

Ultra-Temp<sup>®</sup>

Galva-Temp<sup>®</sup>

US and CANADA



Introduction.....	3
Large Diameter Lengths, Galvanized Galva-Temp®.....	4
Large Diameter Lengths, Stainless Steel Ultra-Temp®.....	5
Round Top w/ Spark Arrestor.....	5
Closure Ring.....	5
30° Elbow.....	6
Interior Resupport.....	6
Attic Insulation Shield.....	6
Anchor Plate with Damper.....	7
Anchor Plate.....	7
Firestop/Joist Shield.....	7
Stabilizer Plate.....	7
Storm Collar.....	8
Flat and Low Pitch Flashing (0 To 2/12 Pitch).....	8
Plastic Sealer.....	8
Fireplace Chimney Sizing Chart.....	9
Chimney Offset Tables for Large Diameter Chimney.....	10

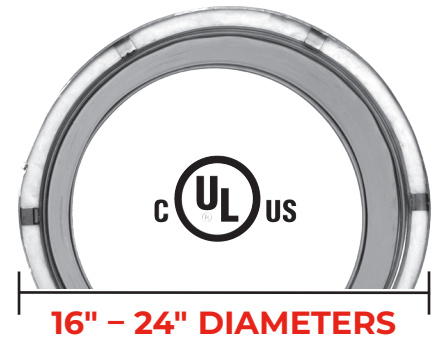
# Large Diameter Chimney

## INTRODUCTION

Selkirk® Large Diameter Chimney is the perfect fit for large custom masonry fireplaces. Selkirk offers the best selection of large diameter chimney pipe in the industry – 16 to 24 inch.

With its stainless steel inner pipe, 1-inch premium insulation and durable outer pipe, our chimney system is **“the coolest under the hottest conditions.”** Outer pipe available in stainless steel or galvanized.

Listed with Underwriters Laboratories, Inc. Selkirk® Large Diameter Chimney is backed by a lifetime warranty, the best in the industry.



### Notes for Ultra-Temp & Galva-Temp:

- 20, 22 and 24 inch Chimney products in galvanized and stainless steel are available by Special Order - allow four weeks.
- 16 and 18 inch stainless steel lengths, and elbows are available by Special Order - allow four weeks.

## TECHNICAL DATA SHEET

### IMPORTANT

This catalog references ULTRA-TEMP/GALVA-TEMP Chimney Systems with maximum test temperatures under Underwriters' Laboratories Safety Standard for Factory-Built Chimneys (UL®-103).

ULTRA-TEMP® UTL/GALVA-TEMP® GTL

Diameter Sizes: 16", 18", 20", 22" & 24"

Part Identification: Letter U and G

Clearances: 2" of airspace to Combustibles

Temperature Ratings: 1700°F (Maximum Test 10 min.)  
1400°F (Maximum for 60 min.)  
1000°F (Maximum Continuous Operating Temperatures)



GTL/UTL is listed to UL103. The components are for use only on masonry fireplaces and specific factory built fireplaces listed to UL127 & certified with a UL103 large diameter chimney, as per the factory built fireplace manufacturer's installation instruction.

### Canada Only

The following information pertains to Canada:

1. Only Ultra-Temp (UTL) is available in Canada
2. Listed to ULC-604 the Standard for Factory-Built Type A Chimneys in which the flue gas temperatures do not exceed 540°C (1000°F).
3. Listed to ULC/ORD-C959 for 540°C and 760°C. Industrial Chimney Standard in which the flue gas temperatures do not exceed 760°C (1400°F).
4. Model UTL may be used for gas and liquid fuel-fired appliances only when sized in accordance with the appliance manufacturer's instructions.

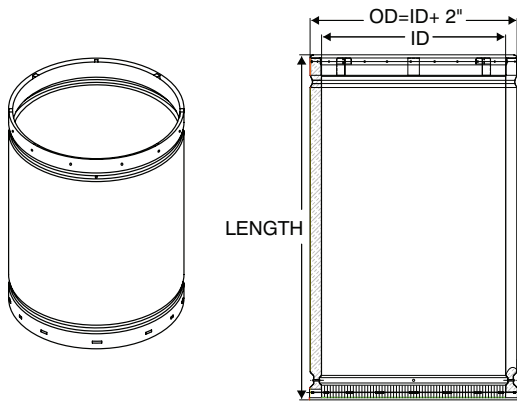
**Note:** Model UTL is not certified to CAN/ULC-629. Do not install Model UTL on a masonry fireplace without first contacting your local authority for approval.

5. Clearances to combustibles are:
  - 16": 2 inches
  - 18" to 24": 3 inches

In Canada, UTL can be used with specific factory-built fireplaces listed to CAN/ULC-610 when specified in the fireplace manufacturer's installation instructions.

## Large Diameter Chimney

### LARGE DIAMETER LENGTHS, GALVANIZED GALVA-TEMP®



**Note:**  $OD = ID + 2''$   
Installed length is less 1-1/4" per joint

Size (ID)	Product	Part	Lengths
16"	216036G	16GT-36	36"
	216024G	16GT-24	24"
	216018G	16GT-18	18"
	216012G	16GT-12	12"
	216006G	16GT-6	6"
18"	218036G	18GT-36	36"
	218024G	18GT-24	24"
	218018G	18GT-18	18"
	218012G	18GT-12	12"
	218006G	18GT-6	6"
20"	220036G	20GT-36	36"
	220024G	20GT-24	24"
	220018G	20GT-18	18"
	220012G	20GT-12	12"
	220006G	20GT-6	6"
22"	222036G	22GT-36	36"
	222024G	22GT-24	24"
	222018G	22GT-18	18"
	222012G	22GT-12	12"
	222006G	22GT-6	6"
24"	224036G	24GT-36	36"
	224024G	24GT-24	24"
	224018G	24GT-18	18"
	224012G	24GT-12	12"
	224006G	24GT-6	6"

## Large Diameter Chimney

Size (ID)	Product	Part	Lengths
16"	216036U	16UT-36	36"
	216024U	16UT-24	24"
	216018U	16UT-18	18"
	216012U	16UT-12	12"
	216006U	16UT-6	6"
18"	218036U	18UT-36	36"
	218024U	18UT-24	24"
	218018U	18UT-18	18"
	218012U	18UT-12	12"
	218006U	18UT-6	6"
20"	220036U	20UT-36	36"
	220024U	20UT-24	24"
	220018U	20UT-18	18"
	220012U	20UT-12	12"
	220006U	20UT-6	6"
22"	222036U	22UT-36	36"
	222024U	22UT-24	24"
	222018U	22UT-18	18"
	222012U	22UT-12	12"
	222006U	22UT-6	6"
24"	224036U	24UT-36	36"
	224024U	24UT-24	24"
	224018U	24UT-18	18"
	224012U	24UT-12	12"
	224006U	24UT-6	6"

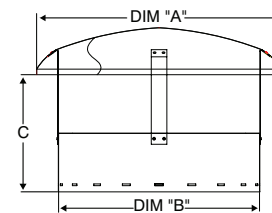
### LARGE DIAMETER LENGTHS, STAINLESS STEEL ULTRA-TEMP®



**Note:**  $OD = ID + 2"$   
Installed length is less 1-1/4" per joint

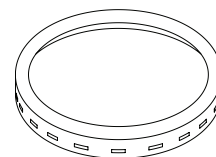
Size (ID)	Product	Part	A	B	C
16"	216804	16S-EZCT/S	24"	18"	14-1/4"
18"	218804	18S-EZCT/S	24"	20"	14-1/4"
20"	220804	20S-EZCT/S	28"	22"	15-1/4"
22"	222804	22S-EZCT/S	32"	24"	17-1/4"
24"	224804	24S-EZCT/S	32"	26"	17-1/4"

### ROUND TOP W/ SPARK ARRESTOR



- Required to cover the insulation at the top of the chimney if any termination other than Selkirk Round Top is used.

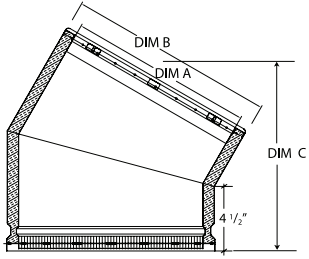
### CLOSURE RING



Size (ID)	Product	Part
16"	216807	16S-CR
18"	218807	18S-CR
20"	220807	20S-CR
22"	222807	22S-CR
24"	224807	24S-CR

## Large Diameter Chimney

### 30° ELBOW



**Note:** - Installed length is 3/4" less than "C" dimension.  
- Offsets not to exceed 30° from vertical in the USA.  
- See Offset Table on page 10

### Galva-Temp®

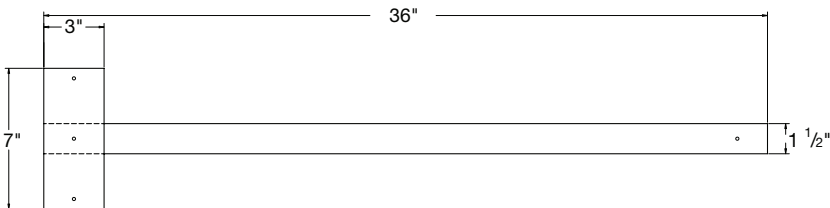
Size (ID)	Product	Part	A	B	C
16"	216210G	16GT-EL30	16"	18"	12.9"
18"	218210G	18GT-EL30	18"	20"	13.4"
20"	220210G	20GT-EL30	20"	22"	13.9"
22"	222210G	22GT-EL30	22"	24"	14.4"
24"	224210G	24GT-EL30	24"	26"	15.9"

### Ultra-Temp®

Size (ID)	Product	Part	A	B	C
16"	216210U	16UT-EL30	16"	18"	12.9"
18"	218210U	18UT-EL30	18"	20"	13.4"
20"	220210U	20UT-EL30	20"	22"	13.9"
22"	222210U	22UT-EL30	22"	24"	14.4"
24"	224210U	24UT-EL30	24"	26"	15.9"

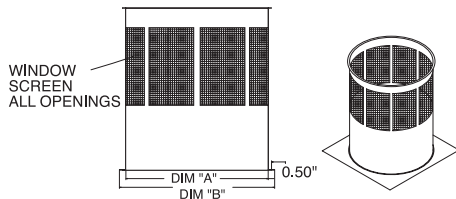
### INTERIOR RESUPPORT

- Used to resupport chimneys that have offsets or vertical runs that require resupport.
- Supports 16 feet of chimney.



Size (ID)	Product	Part
16"	216435	16S-IR
18"	218435	18S-IR
20"	220435	20S-IR
22"	222435	22S-IR
24"	224435	24S-IR

### ATTIC INSULATION SHIELD



- Used to guard against the hazards of insulation.
- Maintains the required 2" clearance to combustibles.
- Must be used if a full enclosure has not been used in attic.

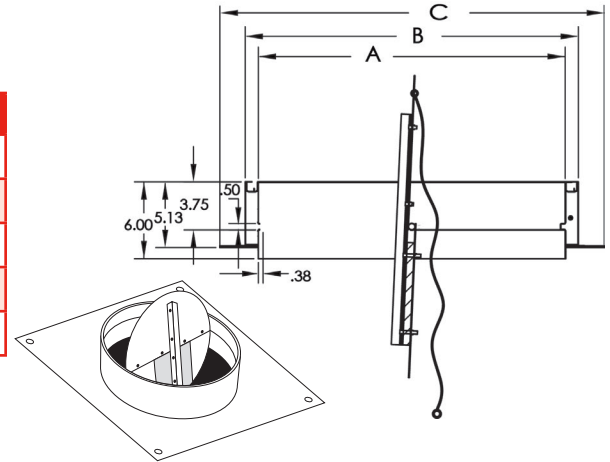
Size (ID)	Product	Part	A	B
16"	216490	16S-AIS	22"	24"
18"	218490	18S-AIS	24"	26"
20"	220490	20S-AIS	26"	28"
22"	222490	22S-AIS	28"	30"
24"	224490	24S-AIS	30"	32"

## Large Diameter Chimney

- Provides a secure connection for the chimney to a masonry fireplace or an existing masonry chimney.
- Includes a built-in damper

Size (ID)	Product	Part	A	B	C
16"	216404	16S-APD	16"	18"	22"
18"	218404	18S-APD	18"	20"	24"
20"	220404	20S-APD	20"	22"	26"
22"	222404	22S-APD	22"	24"	28"
24"	224404	24S-APD	24"	26"	30"

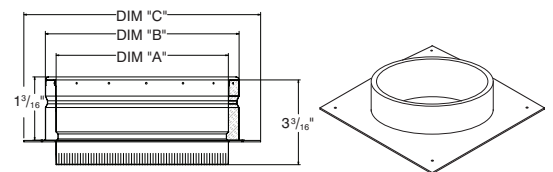
### ANCHOR PLATE WITH DAMPER



- Provides a secure connection for the chimney to a masonry fireplace or an existing masonry chimney.

Size (ID)	Product	Part	A	B	C
16"	216400	16GT-AP	16"	18"	22"
18"	218400	18GT-AP	18"	20"	24"
20"	220400	20GT-AP	20"	22"	26"
22"	222400	22GT-AP	22"	24"	28"
24"	224400	24GT-AP	24"	26"	30"

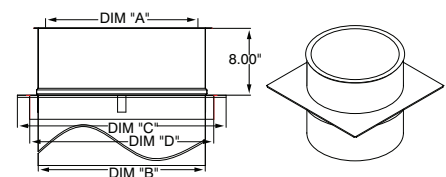
### ANCHOR PLATE - NOW ONLY 1-3/16" HIGH



- Used in floor/ceiling penetrations.

Size (ID)	Product	Part	A	B	C	D
16"	216465	16S-JS	18.13"	20"	25"	22"
18"	218465	18S-JS	20.13"	22"	27"	24"
20"	220465	20S-JS	22.13"	24"	29"	26"
22"	222465	22S-JS	24.13"	26"	31"	28"
24"	224465	24S-JS	26.13"	28"	33"	30"

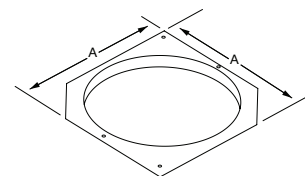
### FIRESTOP/JOIST SHIELD



- Provides lateral support for a vertical chimney only.
- Maintains pipe location within the center of an enclosure.
- Includes spacer ring to help maintain clearance to combustibles.
- Is NOT a firestop and is NOT a support.

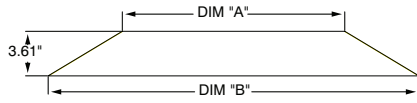
Size (ID)	Product	Part	A
16"	216405	16S-SP	25"
18"	218405	18S-SP	27"
20"	220405	20S-SP	29"
22"	222405	22S-SP	31"
24"	224405	24S-SP	33"

### STABILIZER PLATE



## Large Diameter Chimney

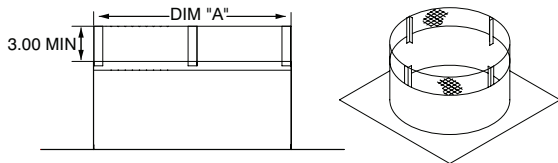
### STORM COLLAR



- Used just above the flashing to provide a weatherproof seal.
- Seal upper end to pipe with sealant against the pipe.

Size (ID)	Product	Part	A	B
16"	216810	16S-SC	18"	30"
18"	218810	18S-SC	20"	32"
20"	220810	20S-SC	22"	34"
22"	222810	22S-SC	24"	36"
24"	224810	24S-SC	26"	38"

### FLAT AND LOW PITCH FLASHING (0 TO 2/12 PITCH)



Size (ID)	Product	Part	A
16"	216872	16S-VTF	22-1/4"
18"	218872	18S-VTF	24-1/4"
20"	220872	20S-VTF	26-1/4"
22"	222872	22S-VTF	28-1/4"
24"	224872	24S-VTF	30-1/4"

### PLASTIC SEALER 1/16" THICK, 3/4" WIDE, 25' LONG

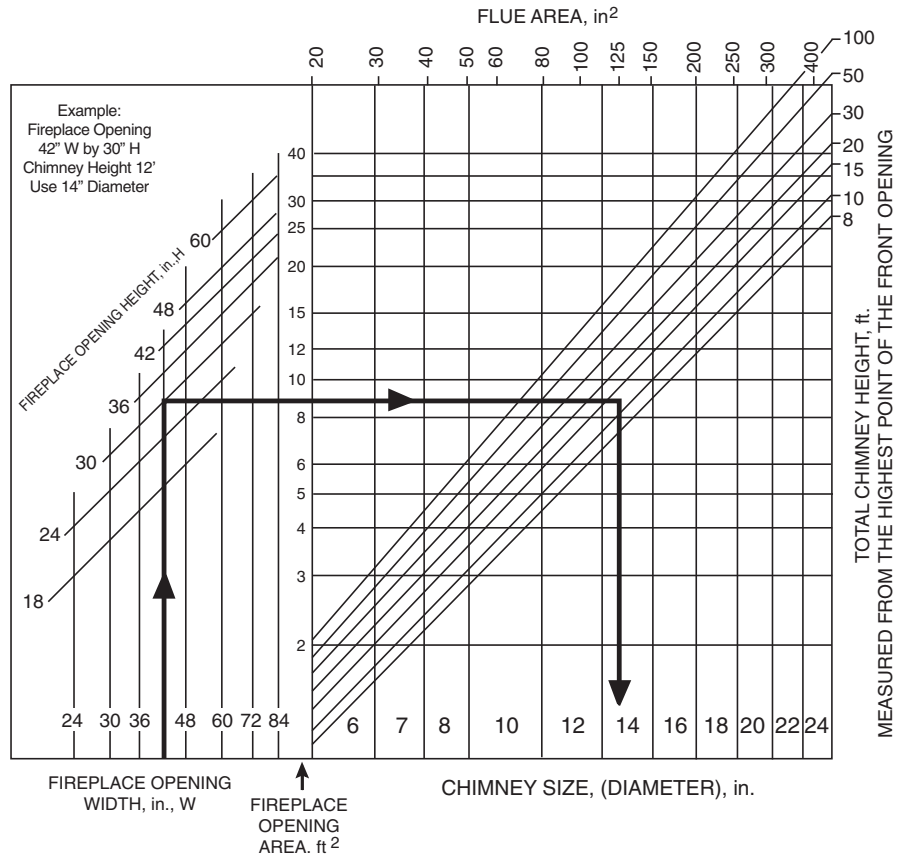
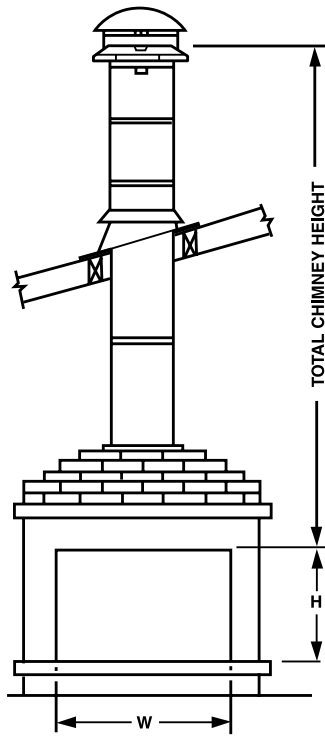
- Seals the space between the roof and the Roof Flashing flange

Product	Part
100000	MB-S



# Large Diameter Chimney

## FIREPLACE CHIMNEY SIZING CHART



## CHIMNEY SIZING FOR MASONRY FIREPLACES

## CHIMNEY OFFSET TABLES FOR LARGE DIAMETER CHIMNEY (INSTALLED LENGTH)

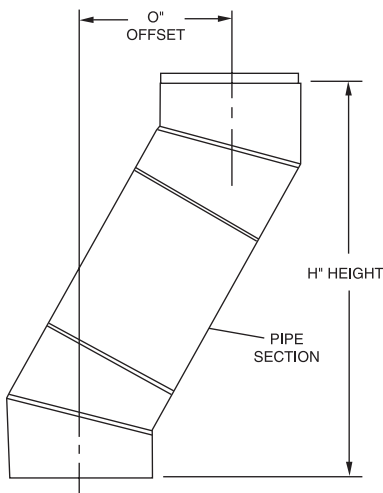
### Example of Chart Use:

Using 16" chimney and 30° elbows, what parts do I use to create an approximate 39" total horizontal offset?

1. From Table 1 - Determine the "Offset" two 16" 30° elbows give with no pipe length. Ans. = (6.30")
2. Subtract that number (6.30") from the total required offset (39").  $39" - 6.30" = 32.70"$ . This is the remaining offset required.
3. From Table 2 determine the closest value to 32.70" in the "Offset @ 30 Degree" Column. (32.88")
4. Reference the adjacent "Number of Chimney Sections" columns to the right to determine the required lengths. (1 x 24" and 4 x 12")

**SUMMARY:** In addition to the 2 - 30° elbows, the required lengths are: one - 24" four - 12". Altogether they will create an offset of  $6.30" + 32.88" = 39.18"$

**NOTE:** To determine the amount of height this assembly will require, follow a similar procedure using the "Height" columns in each table. In this example the total installed height of the assembly will be: 24.70" (elbows) + 56.94" (inclined chimney portion) = **81.64"**



Numerous other combinations may be found too, by adding multiples of individual lengths.

**TABLE 1**

Part	2 Elbows w/o Pipe OFFSET	2 Elbows w/o Pipe HEIGHT
16GT - EL 30°	6.30"	24.70"
18GT - EL 30°	6.55"	25.70"
20GT - EL 30°	6.80"	26.70"
22GT - EL 30°	7.13"	27.70"
24GT - EL 30°	7.35"	28.70"

**TABLE 2**

OFFSET @ 30 Degree	HEIGHT @ 30 Degree	Number of Chimney Sections				Assembled Length
		36"	24"	18"	12"	
5.37"	9.31"				1	10.75"
8.37"	14.51"			1		16.75"
10.75"	18.62"				2	21.50"
11.37"	19.70"		1			22.75"
13.75"	23.82"			1	1	27.50"
16.13"	27.92"				3	32.25"
16.75"	29.02"		1		1	33.50"
17.38"	30.01"	1				34.75"
19.75"	34.21"		1	1		39.50"
21.50"	37.24"				4	43.00"
22.75"	39.40"		2			45.50"
25.13"	43.52"			3		50.25"
25.75"	44.60"	1		1		51.50"
26.88"	46.55"				5	53.75"
28.13"	48.71"		1	2		56.25"
30.50"	52.83"		1	1	2	61.00"
31.13"	53.91"	1		1	1	62.25"
32.88"	56.94"		1		4	65.75"
34.75"	60.20"	2				69.50"
37.13"	64.30"	1	1	1		74.25"
38.88"	67.33"		1	2	2	77.75"
39.50"	68.42"		2	2		79.00"
41.88"	72.53"		1	3	1	83.75"
43.13"	74.70"	2		1		86.25"
44.25"	76.64"		1	2	3	88.50"
45.50"	78.81"		4			91.00"
46.13"	79.90"	2	1			92.25"
47.88"	82.93"		2	3		95.75"
48.50"	84.10"	2		1	1	97.00"
50.25"	87.10"		2	2	2	100.50"
52.13"	90.30"	3				104.25"



BUILD FOR THE FUTURE

Customer Service and Support:

Airmate (USA).....	800.992.8368
Airmate (CAN) .....	888.735.5475
Ameriflow .....	800.252.8467
Amerivent (Retail).....	800.252.8467
Amerivent (Hearth & Wholesale) ....	800.423.4270
Amerivent (Support).....	800.748.0392
AMPCO (USA) .....	800.669.3269
AMPCO (CAN).....	888.735.5475
Duravent .....	800.835.4429
Hart & Cooley.....	800.433.6341
Hart & Cooley (Support) .....	800.748.0392
Heatfab (USA).....	800.772.0739
Heatfab (CAN) .....	800.848.2149
Lima.....	800.423.4270
Milcor .....	800.774.5240
Portals Plus.....	800.774.5240
RPS.....	800.624.8642
Security Chimney (USA).....	800.361.4909
Security Chimney (CAN) .....	800.667.3387
Selkirk (USA) Residential.....	800.992.8368
Selkirk (USA) Commercial.....	800.848.2149
Selkirk (USA) Support.....	800.748.0392
Selkirk (CAN).....	888.735.5475

Manufacturing & Distribution Centers:

CANADA	
Nobel, ON	Manufacturing
Laval, QC	Manufacturing
Prescott, ON	Distribution
USA	
Grand Rapids, MI	Center of Excellence
Dallas, TX	Distribution
Englewood, OH	Distribution
Huntsville, AL	Manufacturing & Distribution
Mira Loma, CA	Distribution
Nampa, ID	Manufacturing & Distribution
Turner Falls, MA	Manufacturing & Distribution
Vacaville, CA	Manufacturing
MEXICO	
Ojinaga, MX	Manufacturing
Mexicali, MX	Manufacturing

Corporate Headquarters:

Duravent Group  
 28 W. Adams, Suite 1810  
 Detroit, MI 48226  
 Tel: 800.835.4429  
 Email: [info@duraventgroup.com](mailto:info@duraventgroup.com)  
[www.duraventgroup.com](http://www.duraventgroup.com)



BUILD FOR THE FUTURE

[www.duraventgroup.com](http://www.duraventgroup.com)

